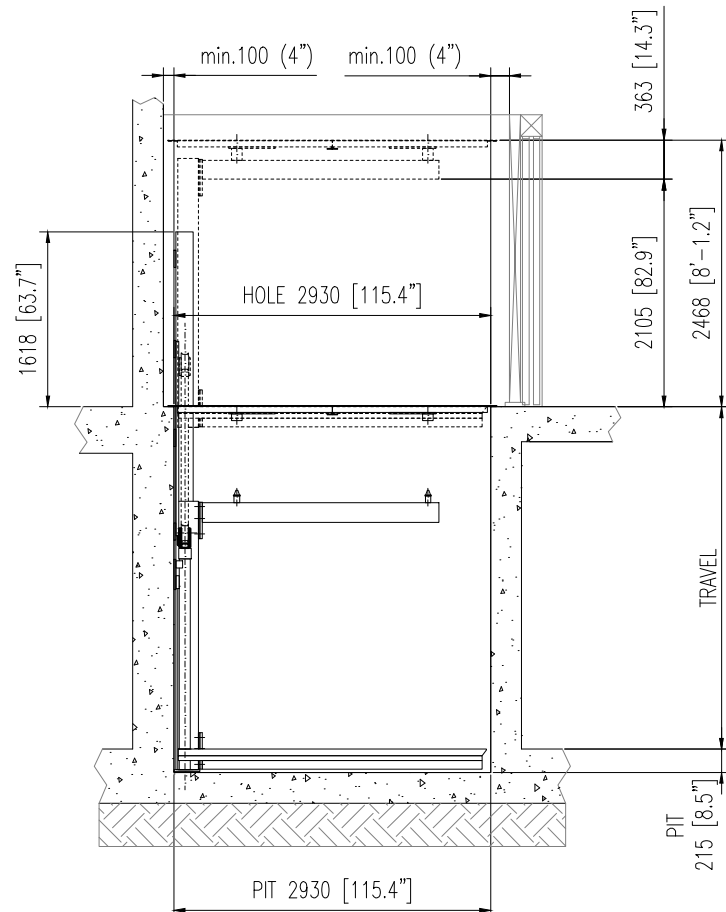
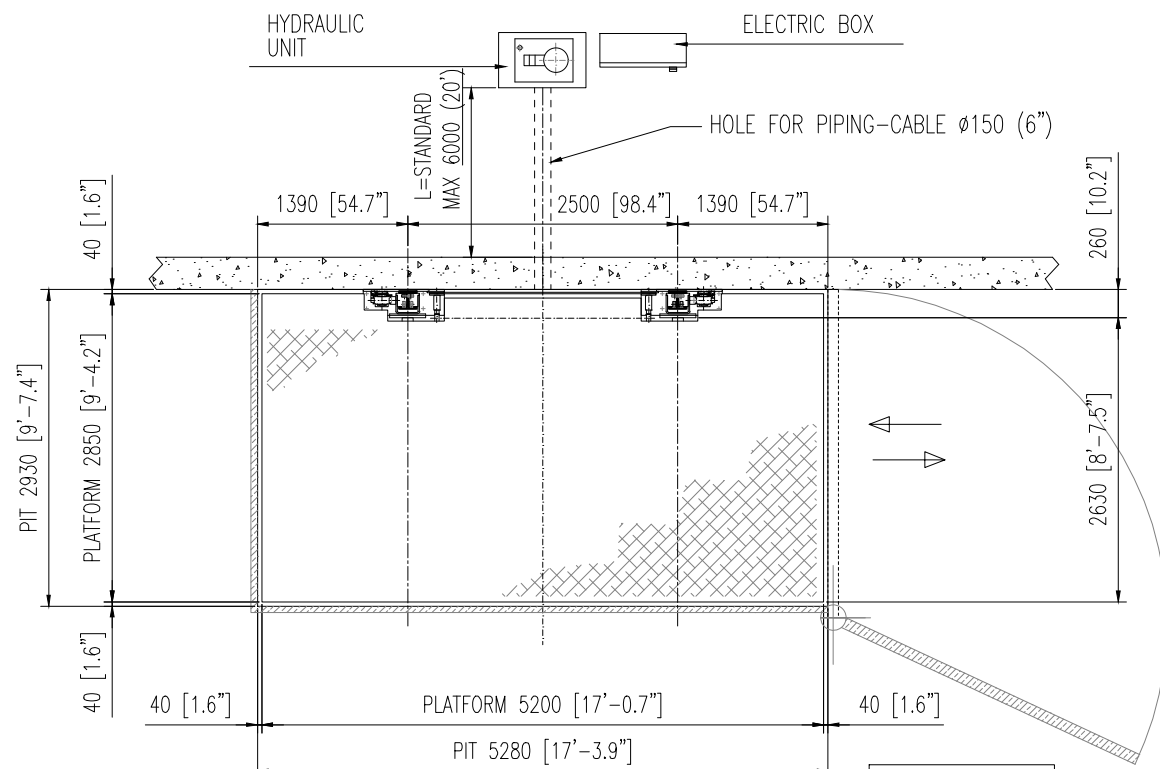


FRONT VIEW



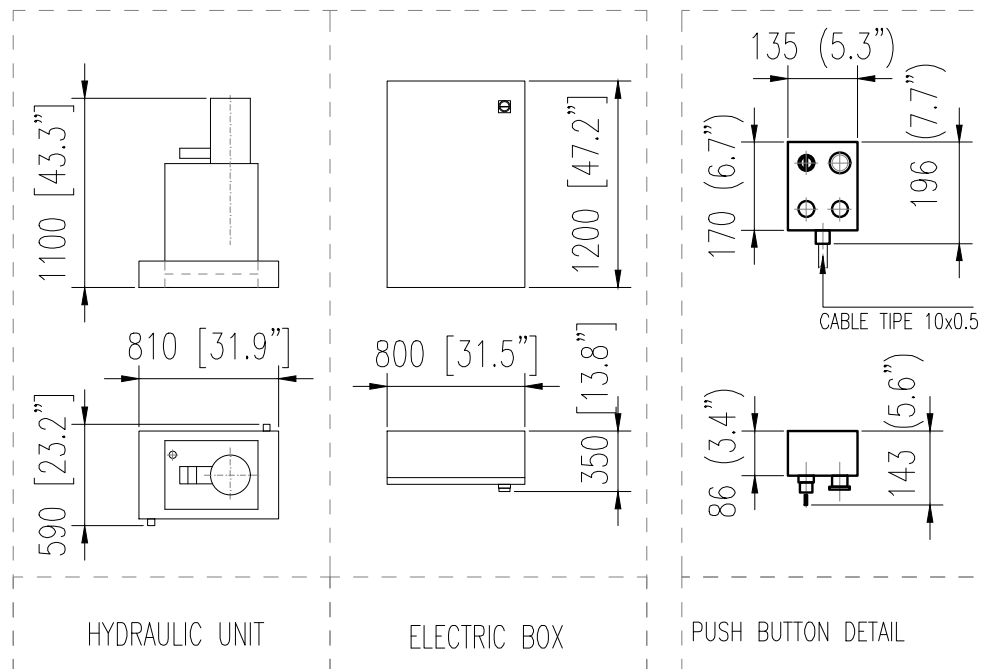
SIDE VIEW



PLANT VIEW

PLEASE DEFINE POSITIONING OF:
- HYDRAULIC POWER UNIT
- PUSH BUTTON

DIMENSIONS mm - inch



GENERAL LAYOUT

THE CUSTOMER HAS TO TAKE CABLE CHANNELS WITH DIAMETER Ø30 (1.3") FOR THE CONNECTION BETWEEN THE CONTROL UNIT AND THE PUSH-BUTTON

FENCES AND SAFETY DEVICES AND PROTECTIONS HAVE TO BE DEFINED BY THE INSTALLATION MANAGER ACCORDING THE FINAL LAYOUT AND THE RELEVANT RISK ANALYS

HLS UNDERLINES THAT:
- THE LAYOUT IS VALID JUST FOR THE QUOTED DIMENSIONS
- THE OUT OF SCALE MEASURES ARE HIGHLIGHTED
- THE LAYOUT CANNOT BE USED TO EXTRACT CONSTRUCTIVE DETAILS, EXCEPT WHERE SPECIFICALLY HIGHLIGHTED

HLS DECLINES ANY RESPONSIBILITY FOR THE IMPROPER USE OF THE DGW FILE

MAX CAPACITY		3000 Kg - 6600 lb			
TRAVEL		2500 (98")<10000 (393") mm			
STOPS		2 (max 6)**			
CYLINDER ROD DIAMETER		ø80 (3.1")			
MAIN POWER		HYDRAULIC			
POWER SUPPLY		400V 3ph 50Hz			
MIN RUNNING PRESSURE		80 bar			
MAX RUNNING PRESSURE		180 bar			
COMMAND TYPE	ON PLATFORM	-			
	AT EACH FLOOR	DEAD MAN			
ELECTRIC LOCK TYPE		PIZZATO FG60AD500Z-V34 24 AC/DC ACTUATOR VFKEYF22			
MAGNETIC SENSOR TYPE		SCHMERSAL BNS 303-11z			
FLOOR	ENTRIES	DOORS	PUSH BUTTON	ELECTRIC LOCK	MAGNETIC SENSOR
1	1	*	1	*	*
2	1	*	1	*	*

MOTOR POWER			7.5 KW	5.5+7.5 KW
NOMINAL CURRENT			15 A	12+15 A
STARTING CURRENT			102 A	90+15 A
MAX SPEED	CYLINDER ROD DIAMETER	ø80 3.1”	0.10 m/s	0.15 m/s
			0.33 ft/s	0.49 ft/s

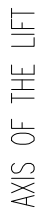
(*) = TO BE DEFINED INTO ORDER
(**) = FOR HIGHER VALUES CONTACT US

REVISIONS:		COPYRIGHT THIS DRAWING IS COPYRIGHT AND THE PROPERTY OF THE AUTHOR IT MUST NOT BE RETAINED, COPIED OR USED WITHOUT THE AUTHORITY OF THE AUTHOR.	
		DISCLAIMER THIS DRAWING AND ITS CONTENTS ARE ELECTRONICALLY GENERATED, ARE CONFIDENTIAL AND MAY ONLY BE USED FOR THE PURPOSE FOR WHICH THEY WERE INTENDED. THE AUTHOR WILL NOT ACCEPT RESPONSIBILITY FOR ANY CONSEQUENCES ARISING FROM THE USE OF THE DRAWING FOR OTHER THAN ITS INTENDED PURPOSE OR WHERE THE DRAWING HAS BEEN ALTERED, AMENDED OR CHANGED EITHER MANUALLY OR ELECTRONICALLY BY ANY THIRD PARTY.	
		NOTE THIS IS AN UNCONTROLLED DOCUMENT ISSUED FOR INFORMATION PURPOSES ONLY, UNLESS THE CHECKED SECTIONS ARE SIGNED OR COMPLETED. FIGURED DIMENSIONS TAKE PRECEDENCE OVER SCALED. DO NOT SCALE REDUCED SIZE DRAWINGS. VERIFY DIMENSIONS PRIOR TO COMMENCING ANY ON-SITE OR OFF-SITE WORKS OR FABRICATION. IF IN DOUBT - ASK	
No.	REVISION DESCRIPTION	DRAWN	DATE

HLS
Equipment



PROJECT TITLE		PROJECT LEADER A.SHARPE		SIGNATURE	
		DESIGNER			
		DRAFTSPERSON MM		DATE	
DRAWING TITLE HLS - M - 30L GD + T		SCALE NOT TO SCALE		SHEET SIZE A3	
JOB No.: -		DRAWING No.: 01		REVISION:	



Floor and wall must to be made of concrete (Quality minimum C25)

ANCHORING POSITIONS

HLS
Equipment
www.hls-equipment.com



PROJECT TITLE	PROJECT LEADER:	SIGNATURE:	
	A.SHARPE		
	DESIGNER:		
	DRAFTSPERSON:	DATE:	
DRAWING TITLE	MM		
	SCALE:	SHEET SIZE:	
	NOT TO SCALE	A3	
	JOB No.:	DRAWING No.:	REVISION:
HLS - M - 30L GD + T	-	02	